

SPRINGFIELD SYMPHONY ORCHESTRA  
CELEBRATING 90 YEARS

STORMY  
WEATHER

MARCH 1, 2025 | 7:30 PM  
with Aubree Oliverson, Violin

JUANITA K. HAMMONS HALL FOR PERFORMING ARTS



This performance is sponsored by:



24-25 Season Presenting Sponsor  
BMW OF SPRINGFIELD  
SUNSHINE & HWY 66

24-25 Season Media Sponsor  
**XSTREAM**  
www.Xstream.com



WVAQ-TV FOX 49  
www.fox49.com



90.5 KADL  
www.905kadle.com  
KUCB 92.3 FM  
radio + live + events

Guest Artist Sponsor William T. White

Let Us Know  
About Your  
Experience





# Streaming that **never skips a beat.**

Download speeds from 250 Mbps up to 1 GIG\*

Powerful whole-home WiFi

24/7 network monitoring with 99.99%\* proven reliability

Flexible installation schedules and NO CONTRACTS



Proud Presenting Media Sponsor of the Springfield Symphony Orchestra

**844-XTREAM3 • [xtream.com](http://xtream.com)**  
1533 S Enterprise Ave, Springfield

\*Not available in all areas. Upload and download speeds may vary. \*\*2024 Mediacom Executive Summary Reliability Report. Xtream powered by Mediacom is a registered trademark of Mediacom Communications Corporation.

# WINE & TAPAS BENEFIT

PRESENTED BY

**SPRINGFIELD SYMPHONY GUILD**

**MARCH 22, 2025 AT 6 P.M.**

## **CENTRAL COAST CALIFORNIA WINE**

Featuring cool coastal climate varietals where Chardonnay, Pinot Noir, and Syrah excel.

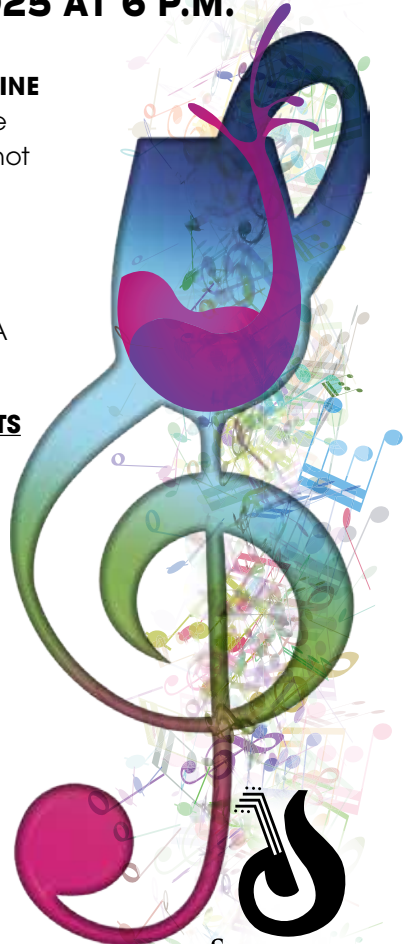
Taste 4 vibrant artisan wines harmonized with Tapas and Charcuterie items.

Join us for fun and regional CA desserts made by The Guild.

## **SCAN QR TO PURCHASE TICKETS**



**VINO  
CELLARS**  
WINE SHOP & LOUNGE  
2137 W Republic Rd  
Tickets \$60



  
**SPRINGFIELD  
SYMPHONY  
GUILD**

# President's Message

As President of the Springfield Symphony Orchestra, I am delighted to welcome you to our 90th anniversary season. This milestone celebrates the enduring power of music and the remarkable support of our community. For nine decades, the Springfield Symphony Orchestra has been a beacon of cultural enrichment, uniting generations through the transformative power of symphonic music.



Our 90th anniversary season promises to be one of our most memorable yet. We have meticulously curated a diverse program that honors our rich history while embracing innovative new works. From beloved masterpieces to groundbreaking contemporary compositions, each concert is designed to inspire, entertain, and move you. Our talented musicians, under the direction of our esteemed conductor, are ready to deliver performances that will resonate deeply with audiences of all ages and backgrounds.

On behalf of the Springfield Symphony Orchestra, I extend my deepest gratitude to our patrons, donors, sponsors, and volunteers. Your continued support and generosity are the bedrock of our success, enabling us to bring the highest quality symphonic music to Springfield. As we celebrate this remarkable milestone, we invite you to join us in commemorating our past, enjoying our present, and anticipating a bright future. Thank you for being an integral part of the Springfield Symphony family. Here's to another 90 years of extraordinary music!

Gregory Beck, SSO President



# Symphony Leadership

## 2024-2025 Staff

**Jennifer Cotner-Jones**  
Executive Director

**Aleksis Zarins**  
Operations Manager

**Tery O'Shell**  
Development & Major  
Gifts Manager

**Kaitlyn Pack**  
Marketing Manager

**Mirela Chakhleu**  
Executive Assistant

**Audrey Yeo**  
Community Outreach &  
Development Manager

**Hallie Schulz**  
Events Coordinator

## 2024-2025 Board of Directors

**Greg Beck**  
President

**Tom O'Neal**  
Vice President

**Nick Altrup**  
Treasurer

**Loretta Knutson**  
Secretary

**Raylene Appleby**  
Immediate Past President

**Patricia Cox**  
Guild President

Barry Armstrong  
Carrie Allwardt  
Denise Baumann  
Bryan Brooker  
David Cook  
Dr. Sam Coryell  
Larry Dissmore

Lynn Dvorak  
Leaster Gibson  
David Hays  
Rebecca Hogan  
Katie Hopkins  
Randy Mayes  
Scott Meier

Sue Reichling  
Jay Sandridge  
Alaina Shaffer  
Tom Tobin  
Kara Turner  
Lincoln Whisler  
Daniel Wooten

## 2024-2025 Board of Trustees

Judy Beisner  
J. Howard Fisk  
Bill Nesbitt  
John B. Steinberg

Krystyna Clarke  
Judy Hellam  
Linda Overend  
Debbie Wessel

Irwin Cohen, President  
Bryan Musgrave  
John H. Simmons

Don Wessel, Honorary  
Rosalie Wooten, Emeritus

Thank you to the following for supporting the Symphony:



# Music Director

We're **Puttin' on the Ritz** here at the Springfield Symphony to celebrate our **90th season!** Our orchestra was formed in 1934 and performed its first concert in February of 1935, and has performed every year since then, through war and peace, prosperity and poverty, and even a pandemic. Through good times and bad, we have continuously made music for the people of Springfield and Southwest Missouri, bringing our community together to share in the excitement and beauty of hearing a live symphony orchestra.



The 1930s were a time of great political upheaval and the Great Depression, but even in the face of such difficulties, music and culture thrived. It was a golden era of transformative new movements in the arts, as we saw the rise of stunning Art Deco in art and architecture, literature that celebrated the rich history of the different regions of our country. In music, the solidification of jazz as a true American art form for everyone as great singers of the day performed and ultimately recorded what would become the standards of the American playbook. We look to those songs that became standards in our founding decade as the inspiration for our concerts this year, and celebrate the way the arts can connect us across the years.

Let our thrilling 90th Anniversary year put you in the mood to celebrate with us while we put on the Ritz and get our rhythm in this major milestone for music in Missouri!

**Read Kyle Wiley Pickett's Bio Here.**

Scan QR code or go online to [springfieldmosymphony.org/meet-the-symphony](https://springfieldmosymphony.org/meet-the-symphony)



Great food. Great service. Your neighborhood.



# Bambinos

Your Neighbor Since 2000

Bambinos on Delmar  
1141 East Delmar  
417-862-9999

Bambinos on Battlefield  
2810-D East Battlefield  
417-881-4442

[www.BambinosCafe.com](http://www.BambinosCafe.com)

*Full menus available online.*



Cereset® uses a patented BrainEcho® technology. EEG records imbalances and acoustically reflects the information back to the brain. **This helps the brain relax, rebalance, and reset.** Cereset helps insomnia, stress, ADHD, PTSD, anxiety and depression.

**To learn more, call 417-616-7802  
to book at consultation today!**



# BODYSMITH

PILATES AND FITNESS STUDIO

Pilates

Boxing

Yoga

Tai Chi



Kettlebells

Juvo Board

Massage

new location

1136 E St. Louis Street

call us  
417.865.0500

visit us on the web  
[bodysmithpilates.com](http://bodysmithpilates.com)

## ROCK STEADY BOXING at THE BODYSMITH

Fighting Back Against Parkinson's

call us 417.865.0500





# Springfield Symphony Guild

## Springfield Symphony Guild 2024-2025 Board of Directors

Patricia Cox, President  
Darlena Calton, Vice President Membership  
Deborah Preston Nesbitt, Vice President Projects  
Mary Reuterfors, Recording Secretary  
Nicole Sanders, Treasurer  
Laura Cowart, Co-Treasurer  
Jean Bardy, Immediate Past President

### 2024-2025 Members

Kathy Alexander	Don Hatfield	Linda Peacock
Raylene Appleby	Barbara Hays	Ruth Peñaherrera-Norton
Rea Armstrong	Judy Hellam	Alice Wiley Pickett
Betty Beach	Pearl Hershberger	Susan Rice
Judy Beisner	Linda Hills	Camille Ricketts
Starla Blair	Janet Hopkins	Jennifer Robinett
Linda Boswell	David Jenkins	Beverly Rohlf
Ermilou Bryan	Sally Jenkins	Jennifer Sade
Karen Burmood	Vicki Keel	Mary Sidwell
Betty Carlton	Emilee Kuschel	Olivia Simpson
Craig Coenen	Loretta Knutson	Nancy Smith
Susan Cohen	Tyler Krtek	Louise Spicer
Connie Coryell	Juanita Lee	Eleanor Strauser
Jennifer Cotner-Jones	Kathy Love	Janet Thomas
Roberta Donnell	Shelia Lundberg	Janet Trotter
Judy Everett	Genny Maroc	Ann VonGeldern
Laura Fleetwood	Julia McGuire	Diana Weaver
Lucille Garrison	Vicki Mitchell	Marilyn Wellsandt
Nancy Gayer	Donna Murney	Kenna Wiggins
Tracey Glaessgen	Stephanie O'Neal	Maggie Wilcox
Barbara Hall	Tery O'Shell	Krista Wilson
Jakie Harmon	Linda Overend	Audrey Yeo
Ellen Hartman	Barbara Page	Beverly Young

Since its inception in 1956, the Springfield Symphony Guild has been a vital contributor to the Springfield Symphony's success. The mission of the Guild is to raise funds for the Springfield Symphony, to encourage a strong commitment to musical education, and to promote the appreciation of symphonic music.

### **Want to become a member?**

Visit the Guild Table in the lobby or online at [springfieldmosymphony.org](http://springfieldmosymphony.org)

# LOVE

WHERE YOU LIVE

**TLC**  
PROPERTIES

*HERITAGE*

# Macaroni KID®

Springfield MO

Family-Friendly Festivals Storytimes  
Open Gyms Teen Activities Toddler Times  
Summer Camps Mommy + Me Classes Preschools  
Childcare Lessons for Kids Doctors Dentists  
Locally Owned Businesses Crafts Recipes & More



Find Your Family Fun®  
in Greater Springfield

Get your FREE Calendar  
of Local Events & Activities for Kids!



● ● ■ JOHN GOODMAN  
**AMPHITHEATRE™**



**Dream bigger together.**

**Missouri  
State.**

REYNOLDS COLLEGE of  
ARTS, SOCIAL SCIENCES  
AND HUMANITIES

[MissouriState.edu/ReynoldsCollege](http://MissouriState.edu/ReynoldsCollege)



**W**e hope you enjoy your evening at the symphony!

The Judith Enyeart Reynolds College of Arts, Social Sciences and Humanities is proud to partner with the Springfield Symphony Orchestra (SSO). Community arts partnerships help deliver enchanting experiences, bringing artists from all over the country to the Ozarks.

We see this commitment to artistic excellence in several other ways:

- *The work of our theatre and dance faculty and alumni, who regularly share their talents with Broadway, film and television audiences*
- *The Reynolds Scholars program that provides a comprehensive scholarship to majors across the college*
- *Our status as an All-Steinway School, which ensures student musicians train on the finest equipment in the world*
- *Tremendous engagement with Springfield's art scene, including the expansion of student exhibition space in the new Carolla Arts Exhibition Center*
- *Screenwriting program rated #1 in the nation by the Broadcast Education Association*
- *The opening of the John Goodman Amphitheatre in the Judith Enyeart Reynolds Arts Park*
- *A vision to build an eight-figure facility that will replace the Art Annex and complete the next phase of the Judith Enyeart Reynolds "front porch"*

When we make arts central to higher education, we train creative problem solvers. When students learn to perform, they learn to communicate effectively. When they learn visual arts, they learn how to execute unique visions. When they learn to play instruments, they develop the self-discipline to accomplish difficult tasks. These are the skills of the future for the jobs of tomorrow.

*Thank you for your continued support of arts in the Ozarks.*

— Dr. Shawn Wahl  
Founding Dean, Reynolds College of  
Arts, Social Sciences and Humanities

**Missouri  
State.**

**REYNOLDS COLLEGE of  
ARTS, SOCIAL SCIENCES  
AND HUMANITIES**



**LEGENDARY PERFORMANCE**  
MAKES A DIFFERENCE!

SPRINGFIELD SYMPHONY  
ORCHESTRA HAS THE  
MUSIC COVERED...

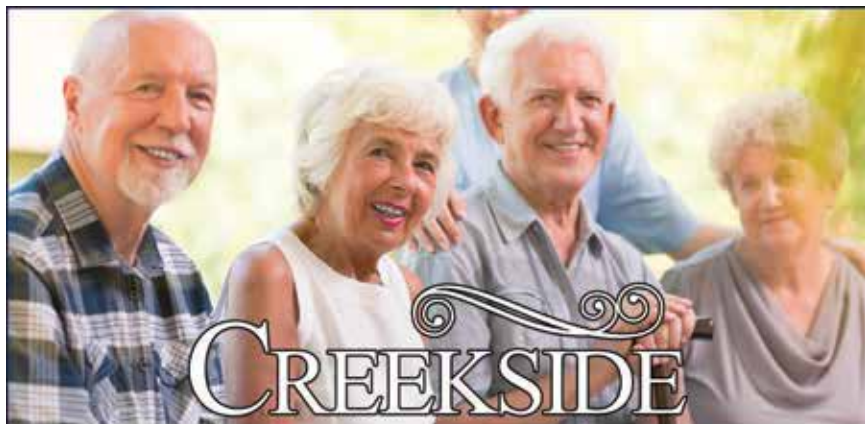
**LET US HANDLE THE REST.**

**Central Bank**  **Central Trust**  
MEMBER FDIC *A Division of The Central Trust Bank*

CENTRALBANK.NET  
417-881-3100

CENTRALTRUST.NET  
417-883-3838

 **Equal Housing Lender**



AT ELFINDALE

## *Independent & Assisted Living*

Creekside at Elfindale,  
Independent Living  
1601 S. Fort St.  
Springfield, MO. 65807  
417-831-3828

Creekside at Elfindale,  
Assisted Living  
1401 W. Elfindale St.  
Springfield, MO 65807  
417-501-1000



## *The Affordable Lifestyle You Deserve!*

When it was time in our life, we needed new options and less worry. Creekside, who specialize in independent & assisted living, showed us an easy choice and it is more affordable than we thought possible. It was the best decision we made, now we have everything we could want...

- Activities galore
- Great dining
- Transportation
- Total maintenance

...and a beautiful place to live!

Creekside is all about catering to you. *We love it!*

*Call for  
a tour  
today,  
and check  
us out  
online!*

[www.elfindaleretirement.com](http://www.elfindaleretirement.com)



### **AROUND THE OZARKS NEWS**

Around The Ozarks News is a news update every weekday morning at 5 a.m. from Ethan and Sara Forhetz. Ethan and Sara keep you up to date with local news, events, non-profit opportunities, local groups making a difference, and entertained with their banter.



### **AROUND THE OZARKS WAKE UP WEATHER**

Around The Ozarks Wake Up Weather is a weather update every weekday morning at 5 a.m. from Meteorologist Abby Dyer. Wake Up Weather is for anyone, from a weather enthusiast to someone who wants a quick forecast while getting ready for work.



### **SAVOR THE OZARKS**

Savor The Ozarks, hosted by Joy Robertson, is a weekly podcast about the culinary scene around the Ozarks and beyond. Joy shares stories, speaks with restaurant owners, and gives special insight into beloved, local restaurants.



### **AT HOME WITH EMILY**

At Home with Emily, hosted by Emily Wood, is a weekly podcast about how life happens at home. Emily explores all things home, family, relationships, with some design and style sprinkled in.



### **AROUND THE OZARKS SPORTS SCENE**

Around The Ozarks Sports Scene, hosted by Scott Puryear, is a weekly podcast about all about sports. Scott interviews area sports personalities from past and present to talk about area sports and national sports topics of local interest.



### **AROUND THE OZARKS REWIND**

Around The Ozarks Rewind, hosted by Woody & Janet, is a weekly podcast from your favorite local radio legends. Woody & Janet revisit memories from old radio days together, catch up with your favorite local personalities, and discuss anything under the sun.



**AROUNDTHEOZARKS.COM**

**Start your morning with Around The Ozarks, every weekday morning! Scan the QR code to subscribe to our daily newsletter.**





# CREATIVE PARTNER OF THE SPRINGFIELD SYMPHONY SINCE 2012

**Digital Lunchbox doesn't just create videos.  
They produce success.**

A seasoned team of experts produces videos that boost awareness, foster engagement and generate excitement around your people, products and mission.



*Scan to see more* →



**Digital Lunchbox**

[DigitalLunchbox.com](http://DigitalLunchbox.com)



ANGLER'S PORT MARINE



**PROUD  
SUPPORTER**

**OF THE  
SPRINGFIELD  
SYMPHONY**



13979 Hwy. 7  
Warsaw, MO



[anglersportmarine.com](http://anglersportmarine.com)



660.438.4600

# Community Banking is Our Specialty

Like an orchestra in perfect harmony, community lives at the heart of OMB. It's a steadfast commitment to excellent service and strong relationships for 25 years. From private banking to mortgage lending, we're dedicated to making community banking a better experience than ever before.



*Community Banking Made Better*

**OMBBANK.COM | (888) 662-2443**

 EQUAL HOUSING LENDER Member **FDIC** NMLS #733051



**CELEBRATING 50  
YEARS OF SMILES IN  
OUR COMMUNITY!**

General Dentistry  
Pediatric Dentistry  
Orthodontics

**417-887-1220**  
[parkcrestdental.com](http://parkcrestdental.com)



**FAMILY DENTISTRY IN ONE  
CONVENIENT LOCATION!**

# Because Local News Should Be Local

SUBSCRIBE TO  
SPRINGFIELD

SPRINGFIELD  
DAILY  
CITIZEN



Be *informed.*

Be *inspired.*

Be *connected.*

Scan to  
subscribe





## A Proud Supporter Of Springfield Symphony Orchestra

Positronic, an Amphenol company, is a manufacturer of high precision electronic connectors. From aircraft and defense electronics to MRI machines and web servers, Positronic products can be found in all types of mission-critical applications around the world. Check out [connectpositronic.com](http://connectpositronic.com) for more details about a company making a difference both locally and globally.

THE SCIENCE  
OF **CERTAINTY**®



**Positronic**  
an Amphenol company

# Corwin | Automotive Group



3306 E Kearney St  
Springfield, MO 65803

**Corwin**  
SPRINGFIELD  
CHEVROLET DODGE // Jeep RAM  
417-862-9272  
[www.corwindodgejeepramofspringfield.com](http://www.corwindodgejeepramofspringfield.com)



3241 S Glenstone Ave  
Springfield, MO 65804

**Corwin** |   
SPRINGFIELD  
417-883-4330  
[www.corwinfordofspringfield.com](http://www.corwinfordofspringfield.com)



1740 US-60  
Republic, MO 65738

**Corwin** |   
REPUBLIC  
417-732-2626  
[www.corwinfordrepublic.com](http://www.corwinfordrepublic.com)

## Our Classics

You can't resist Hiland's classic flavored milks! With 13 essential nutrients including protein, they're a tasty and nutritious drink.

Proud Supporter of the  
Springfield Symphony Orchestra



Locally Made.  
Naturally Delicious.™

[HilandDairy.com](http://HilandDairy.com)



PRESENTING SPONSOR  
SPRINGFIELD SYMPHONY ORCHESTRA



BMW OF SPRINGFIELD  
SUNSHINE & HWY 65



# Program

**Grażyna Bacewicz** (1909 - 1969)  
*Overture (1943)*

Running time: approximately 6 minutes

**Jean Sibelius** (1865 - 1957)  
Violin Concerto in D minor, Op. 47 (1904)

- I. Allegro moderato
- II. Adagio
- III. Allegro, ma non tanto

*With Aubree Oliverson, Violin*

Running time: approximately 35 minutes

## Intermission

**Ludwig van Beethoven** (1770 -1827)  
Symphony No. 5 in C minor, Op. 67 (1808)

- I. Allegro con brio
- II. Andante
- III. Scherzo: Allegro
- IV. Allegro

Running time: approximately 35 minutes

## Program Notes

Program notes for this performance can be picked up at the marketing table or scan the QR code.



# Proud to support a truly instrumental part of the Ozarks.

Here's music to your ears:  
A downtown hotel experience  
that's vibrant, affordable and young-at-heart.  
Unique to Springfield. Uniquely Tru.



517 E. Elm St.  
Downtown Springfield  
by HILTON™  
from Bryan Hotels Management, LLC

Help bring  
**GREAT ART**  
into every  
home.

Support your local  
NPR & PBS stations.



**OZARKS**  
public broadcasting

KSMU Radio, 91.1 FM  
Ozarks Public Television, KOZK/KOZJ

**Give today at**  
**[ksmu.org](http://ksmu.org) or**  
**[optv.org](http://optv.org).**



# Musicians

## VIOLIN I

David R. Hays, Concertmaster  
*Sponsored by Dr. Shawn Wahl, Missouri State University, Reynolds College of Arts, Social Sciences and Humanities*

Aleksis Zarins,  
Assistant Concertmaster  
*Sponsored by Raylene & David Appleby*

Timothy Daucher  
*Sponsored by Bryan Properties*

Larry Dissmore  
*Sponsored by Dr. Sam & Connie Coryell*  
*Sponsored by Margo Simson Armstrong*

Carol L. Harrison+  
*Sponsored by Tony & Jan Atkinson*

Elijah Hertzog

Kelly Owens  
Bethany Phillips

Nathan Price

Cynthia Rose  
*Sponsored by Corwin Automotive*

Santiago Salazar

Allison Steiner\*

## VIOLIN II

Jill Woodhouse, Principal  
*Sponsored by Linda Overend*

Erik Hassell, Assistant Principal\*  
*Sponsored by Tony & Jan Atkinson*

Danyal Collins-Sallee

Suzannah Dolanc Pugh+  
*Sponsored by Don Hatfield & Mary Reuterfors*

Linda Hills  
*Sponsored by Springfield Symphony Guild*

Janet Hopkins

Naomi Meng  
*Sponsored by Loretta Knutson & Gary Soderberg*

Barbara Page  
*Sponsored by Anonymous*

Roshelle Pekarek\*

Elizabeth Suh  
*Sponsored by John W. Hunt, PhD and Karen L. Hunt*

## BASS

Sue Stubbs, Principal  
*Sponsored by Linda Overend*

Riley Robison, Assistant Principal

Kelsey Atteberry\*

David Curtman

James McManis\*

Kyth Trantham

## VIOLA

Kirsten Weingartner Weiss, Principal  
*Sponsored by Irwin & Susan Cohen*

Ned Horner, Assistant Principal  
Starla Blair  
*Sponsored by Springfield Symphony Guild*

Regan DeRossett\*

Carla Geter

Linda Sinden Gottfried

Kathy Murray+

Mary Zimmerman

## CELLO

Adonis Garcia, Principal  
Jacqueline Trtan, Assistant Principal

Alejandro Quiceno Garcia

Suzanne Harlamert

Kathy Love+

*Sponsored by Louis and Mary Toth*

Emilia Stauffer

*Sponsored by Judy Hellam*

Elise Thierbach

Daniel Yung\*

## FLUTE

Jill Heyboer, Principal  
*Sponsored by Dr. Shawn Wahl, Missouri State University, Reynolds College of Arts, Social Sciences and Humanities*

Betsy Nace

*Sponsored in memory of Esther S.*

*Karchmer*

Chi Trumbo

## PICCOLO

Chi Trumbo

## OBOE

Lauren Claire White, Principal+  
*Sponsored by Maggie Wilcox*

Andrew Baker, Principal

Fiona Slaughter

# Musicians

## ENGLISH HORN

Fiona Slaughter

## CLARINET

Allison Storochuk, Principal  
*Sponsored by Dr. Shawn Wahl, Missouri State University, Reynolds College of Arts, Social Sciences and Humanities*

Sheri Slater  
*Sponsored by Jean Bardy and Karen Burmood*

Joanne Britz +

## BASS CLARINET

Joanne Britz+

## BASSOON

John Atteberry, Principal  
Dennis Pearson  
James Keel Williams

## CONTRABASSOON

James Keel Williams

## HORN

Lisa Casey, Principal  
*Sponsored by Dr. Shawn Wahl, Missouri State University, Reynolds College of Arts, Social Sciences and Humanities*

Stephen Hanrahan\*  
Eric Jackson  
*Sponsored by Larry & Mary Sidwell*  
Richard Ruhe\*  
Stephanie Ruhe

## TRUMPET

Tijuana Julian, Principal+  
Timothy Wootton, Principal  
*Sponsored by KOLR10*  
J. Matthew White  
Jeff Nall+

## TROMBONE

Michael Stine, Principal  
Bob Swanson

## BASS TROMBONE

Jason Hausback+  
*Sponsored by Dr. Shawn Wahl, Missouri State University, Reynolds College of Arts, Social Sciences and Humanities*  
Darwin Gist\*

## TUBA

Max Gerhart, Principal

## TIMPANI

Jacob Hord, Principal+  
Susanna Reichling, Principal  
*Sponsored by Community Foundation of the Ozarks*

## PERCUSSION

Ethan Linfoot  
Tim Morton

## KEYBOARD

Melinda Smashey Jones, Principal+  
*Sponsored by Judy Hellam*

## HARP

Maria Trevor, Principal+

## ASSISTANT CONDUCTOR

James Davidson

## MILESTONES

Starla Blair - 50 years  
Carol Harrison - 40 years  
Kathy Love - 35 years

Nathan Price, Stage Manager  
Mollie Glenn, Stage Assistant

As of 2/13/2025

*Special thanks to the Tru by Hilton Hotel, and John & Pat Horner for hosting our out-of-town\ orchestra members during the 24-25 season.*

+denotes on leave

\*denotes acting position

String sections use revolving seating



*Foster Hospitality Group*

**A *Legacy of Caring***  
**that began over 60 years ago.**

**Specializing in assisted living communities**

**Development**

**Construction**

**Management**



**Robert (Tony) Foster, President**  
**Kaye Foster-Gibson, Senior Vice President**  
**(417) 831-0174**

**FosterHospitalityGroup.net**

# Guest Artists



## Aubree Oliverson, Violin

Praised for her evocative lyricism and joyful, genuine approach, young American violinist Aubree Oliverson is proving to be one of the most compelling artists of her generation, distinguishing herself with clear, honest, and colourful performances, which have been described as “powerful... brimming with confidence and joy” by the (Miami New Times).

Acclaimed as a “masterful” soloist (San Diego Story), Aubree’s most recent solo appearances in 2023 include season openings of the Chamber Orchestra of New York at Carnegie Hall (di Vittorio),

Utah Symphony at Abravanel Hall (Morlot), Peace Orchestra Project (Mengoli), and Ridgefield Symphony with a pairing of the Barber and Esmail violin concertos. Other season highlights include performances with the Royal Liverpool Philharmonic (Teychenné), Columbus Symphony (Miller), Orquesta Sinfónica de Navarra (Hoving), North Carolina Symphony (Prieto), Pacific Symphony (St. Clair), Des Moines Symphony (St. Clair), Amarillo Symphony (Jackson), Moldavian Philharmonic (Macek), Excelentia Madrid (Braunstein), Slovak Sinfonietta (Foron), Rouse Philharmonic Orchestra (Sachedina), New Haven Symphony (So), Puerto Rico Symphony (Valdés), and the Kontrapunktus Baroque Ensemble; in works by Brahms, Dvorak, Barber, Bruch, Korngold, Mendelssohn, Tchaikovsky, Weinberg, Haydn, Saint-Saens, Esmail, and Bach.

Learn more at [ataubreeoliverson.com](http://ataubreeoliverson.com)



Lyric **OZARKS** Opera

2024-2025



World So  
**WIDE**

**THE TENDER LAND**  
*Aaron Copland*

**THE LITTLE PRINCE**  
*Portman & Wright*

**A FOREIGN AFFAIR**  
*with Sir Michael Speyer*

*also featuring*

OPERA ROCKS / HOME FOR THE HOLIDAYS / JAZZ ARIA



Scan For  
**Tickets**

WWW.OZARKSLYRICOPERA.COM

417.763.5661

# The Walnut Street Inn

An urban Bed & Breakfast, for business and pleasure.



In the heart of Springfield's Historic District  
[www.walnutstreetinn.com](http://www.walnutstreetinn.com) | 417.864.6346

If you haven't been "inn" lately, find us on:  
@walnutstreetinn.springfield.mo  
@comestaywithus





# 417

FOR THE OZARKS

## 417-land is *our forte*

Local love comes naturally to us, and we're here to root for the people, places and experiences that make our home in 417-land unique.

At 417, we're for the Ozarks.

[417MAG.COM/SUBSCRIBE](http://417MAG.COM/SUBSCRIBE)

NOW OPEN FOR VISITATION!

## Birchpointe Health and Rehabilitation features 3 distinct communities within our facility



**Short term rehabilitation community** Our short term rehab program is designed to help you safely recover from a hospitalization.

**Long term care community** This setting provides nursing care, meals, activities and a comfortable home like environment for those who can no longer live at home independently,

**Dementia care community** This program provides specialized nursing services and programs for those individuals who have Dementia or related conditions.

**For more information, please stop by for a personal tour or give us a call at 417-889-0773**



**BirchPointe**  
HEALTH & REHABILITATION

3705 S. Jefferson Ave. Springfield, MO 65807 | [birchpointehealth.com](http://birchpointehealth.com)

GREAT SOUTHERN BANK  
**BROADWAY SEASON**

AT JUANITA K. HAMMONG HALL FOR THE PERFORMING ARTS



SEPTEMBER 9-11, 2024



OCTOBER 8-10, 2024



NOVEMBER 4-7, 2024



JANUARY 28-30, 2025



APRIL 7-9, 2025



**HammonsHall.com • 417-836-7678**



LOCALLY ROOTED • SPRINGFIELD, MO

# Mama Jean's

## Natural Market

--- THREE LOCATIONS TO SERVE YOU! ---

3530 E. Sunshine • 228 W. Sunshine  
1110 E. Republic Rd.



# KICK 92.3 FM

NEWS • TALK • SPORTS

923KICK.COM

YOUR  
HOME  
FOR



ONLINE • ON AIR • ON YOUR PHONE

SPRINGFIELD'S **ONLY** LOCALLY OWNED & OPERATED  
COMMERCIAL RADIO OR TELEVISION GROUP

# 99.5 KADI FM

Today's #1 Christian *Hot* Music

Playing the newest & coolest Contemporary Christian Music

# Over 34 Years!

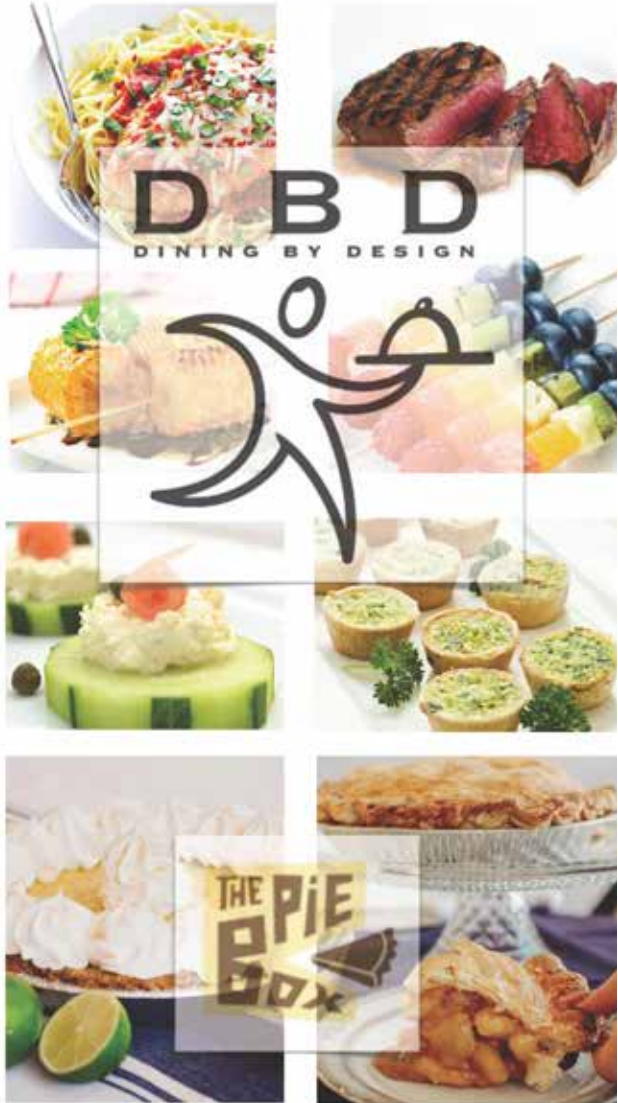


**Steve Savard | Bailey Strohl**



Full Service Small & Large Scale Event &  
Catering Services

417.866.4630 DBDGourmet.com



417.886.4PIE

ThePieBox.com

Thank You Dining by Design  
for sponsoring the  
Springfield Symphony Orchestra!



JOIN US FOR OUR 2024-2025 SEASON

# The Nutcracker

December 19-23, 2024

# SWAN LAKE

ACT II  
PLUS PETER & THE WOLF

May 16-18, 2025

Don't miss  
this season of  
classic ballets!



Springfield Ballet, Inc. is a non-profit organization and is not responsible for any loss through credit card, debit card, or other means of payment. Copyright © 2024 All Rights Reserved. Image courtesy of Michael Photography

Proud to support those that **move us**

As you chase down your vision, we'll be behind you every step of the way with award-winning support, helping to bring your dreams within reach. **Thank you for inspiring us.**



**GREAT SOUTHERN BANK**  
GreatSouthernBank.com



# FIRST & CALVARY

We are a loving church family that values the beauty of the arts and actively celebrates/invests in the arts for the common good of the community.

## Musical Offerings Concert Series

Join us for our 2024-2025 Season

Details about this season and more of our arts events and programs can be found at [firstandcalvary.org](http://firstandcalvary.org)



SPRINGFIELD LITTLE THEATRE 90<sup>TH</sup> EMERALD ANNIVERSARY SEASON



PRESENTED LIVE AT  
**THE HISTORIC LANDERS THEATRE**  
417-869-1334 · [SPRINGFIELDLITTLETHEATRE.ORG](http://SPRINGFIELDLITTLETHEATRE.ORG)





# MORNINGS WITH NICK REED

WEEKDAYS 6 AM - 9 AM

**104.1**  
**KSGF**

DOWNLOAD THE SPRINGFIELD'S TALK 104.1 APP TO  
START LISTENING TODAY!



APPLE



ANDROID



# Staying is believing

Located in the heart of Springfield,  
just steps from the arts, entertainment, and fine dining.  
Unique to downtown. Uniquely Tru.



517 E. Elm St.  
Downtown Springfield  
by HILTON™  
from Bryan Hotels Management, LLC

# THE PLACE TO BE

---



PROUD SUPPORTERS OF  
**THE  
SPRINGFIELD SYMPHONY**

Watch Springfield Symphony Featured On

the **PLACE**

Weekdays at 3:00 pm on **KY3**



ACCOUNTING

TAXATION

TECHNOLOGY

AUDITING

FINANCIAL

*When experience matters,  
we're here for you.*

 **RMMC**  
CERTIFIED PUBLIC ACCOUNTANTS

4035 S FREMONT SPRINGFIELD, MO 65804  
417.883.5348 • [RMMC-CPA.COM](http://RMMC-CPA.COM)

# **JDubya's** **GARAGE**<sup>®</sup>



# Corporate & Foundation Supporters

## Platinum Baton Level

\$25,000 and above

BMW of Springfield  
Greene County Senior Citizens'  
Services Board Fund  
KY3/KSPR\*  
Mediacom/Xtream\*  
Missouri Arts Council  
Schneider Foundation  
Tru by Hilton\*

## Gold Baton Level

\$10,000- \$24,999

Cook Family Foundation  
Corwin Automotive  
Earl Barkley Foundation  
Foster Hospitality Group  
Hatch Foundation  
KICK-KADI\*  
KSGF\*  
Mid-West Family Broadcasting  
and Marketing\*  
Positronic Industries  
Springfield Daily Citizen\*  
Springfield Symphony Guild  
Dr. Shawn Wahl, Missouri State  
University, Reynolds College  
of Arts, Social Sciences and  
Humanities

## Silver Baton Level

\$5,000- \$9,999

417 Magazine\*  
Altec Solutions Group\*  
Angler's Port Marine  
Bryan Properties  
Central Bank/Central Trust  
Creskide at Elfindale  
Digital Lunchbox\*  
Hiland Dairy  
KOLR10\*  
KSMU\*  
Macaroni Kids\*  
Mumford Investments  
Revel Advertising  
RMMC\*  
Stanley and Elaine Ball Charitable  
Foundation  
Squibb Media\*  
TLC Properties

## Concerto Level

\$2,500- \$4,999

Arlene McReynolds Estate  
Cereset  
First and Calvary Presbyterian  
Church\*  
Great Southern Bank  
Larry P. O'Reilly and Family Foundation  
Mama Jean's Natural Market\*  
Moxy Springfield Downtown\*  
OMB Bank  
Parkcrest Dental Group  
Sedora Charitable Trust  
The Payroll Company  
Walnut Street Inn/Bambino's\*

## Conductor Level

\$1,000- \$2,499

Ameriprise Financial  
Community Foundation of the  
Ozarks  
Dental 32  
Dining by Design\*  
Jimm's Steakhouse\*  
Maschino's\*  
Obelisk Home  
Ozarks Coca Cola\*  
Creskide Retirement Community

## Concertmaster Level

\$500- \$999

Birch Pointe Health and  
Rehabilitation  
Merrill Lynch  
Simmons Bank  
Springfield Convention and Visitors  
Bureau\*

## President's Level

\$100- \$499

Carnahan, Evans, Cantwell & Brown  
Labellarte Enterprises LLC  
The Elder Law Group, LLC

\*denotes in-kind donation

Support reflective as of February 11, 2025, for the current fiscal year. Fiscal year runs July 1, 2024 through June 30, 2025. It is important to the SSO that all our supporters are recognized for their generosity. If you have donated to SSO and have been inadvertently not included, please accept our sincere apologies and call our office so that we can correct this oversight.

# Individual Supporters

## Platinum Baton Level

\$25,000 and above

Guy and Dorothy Mace\*

## Gold Baton Level

\$10,000- \$24,999

Judy Beisner

Judy Hellam

Jarvis/Rauwerdink Trust

Jon and Debbie Wessel

Maggie Wilcox\*

## Silver Baton Level

\$5,000- \$9,999

Anonymous

Gregory and Cheryl Beck\*

Dr. Robert and Peg Carolla

Dr. Michael and Krystyna Clarke

Fraley Fund

Michael Freeland

Linda Overend

Louis and Mary Toth

Janet Trotter\*

Rosalie O'Reilly Wooten

## Concerto Level

\$2,500- \$4,999

Nick and Jamie Altrup

Raylene and David Appleby

Margo Simson Armstrong

Tony and Jan Atkinson

Dr. Sam and Connie Coryell

Ed and Vickie Donnell

Sarah Hitesman

Bryan and Amber Musgrave

John and Elizabeth Raidel\*

Bill and Camille Ricketts\*

Larry and Mary Sidwell

John B. Steinberg

## Conductor Level

\$1,000- \$2,499

Barry and Rea Armstrong

Jean Bardy

Jeff and Alison Bauer\*

Patricia Brewer

Loren and Nancy Broaddus\*

Karen Burmood

Dr. Lynn and Betty Carlton

Irwin and Susan Cohen

Tamara Conn

Michael Esch

J. Howard and Jan Fisk

Betty Gournoe

Mary Belle Graham

Barbara Cook Hall\*

Don Hatfield and Mary Reuterfors

Susan and Don Holliday\*

John and Pat Horner

John and Karen Hunt

David and Sally Jenkins

Loretta Knutson and Gary Soderberg

Robert and Alice Lunn

Fredna B. Mahaffey

Genny Maroc

Greg and Judy McManus

Jay and Susan Milne

Bill and Debbie Nesbitt

Tom and Stephanie O'Neal

John and Erin Palicki

Arleen Pickett

Ned Reynolds

Dr. Michael and Karen Schneider

Phil and Val Wieneke

## Concertmaster Level

\$500- \$999

Todd Barrett

Sharon Benton

Linda Brite

Dr. Yvonne Bussman

Dr. Lynn and Betty Carlton

James and Nancy Ceasar

Patricia Cox

George and Mary Ann Cyr

Don Emler

Judy Everett

Klaus and Denise Fink

Milton and Judy Folkins

Dr. Mark Grimm

Mark and Bonnie Herron

Rebecca Hogan

Michael and Harriet Luzecky

Winifred Nixon

C.H. Robinson

Charles and Cindy Rodgers

Karen Selby

Mary and Dan Zimmerman

\*denotes 1935 Club Member

# Individual Supporters

## President's Level

\$100- \$499

Andrea Arvig  
Nancy Back  
Ben Beranek  
Loren and Nancy Broadus  
Rosemond Clapp  
William and Regina Cooper  
Thomas and Nancy Dornan  
Dr. Andrew and Leane Fiore  
Carolyn Gerdif  
Shannon Goss  
Emery Hatfield  
Robert and Barbara Hays  
Larry and Anne Henry  
Pearl Hershberger  
Joe and Linda Hills  
Lora Hills  
Dr. Ann Hilmo  
Joyce Hopper  
David and Tammy Jahnke  
Mark Jones  
Bob and Barbara Kipfer  
Scott Lambeth  
Jack Langley  
George McGriff  
Jim and Sue Moore  
Wallace and Joyce Munden  
Virginia Ormsby  
Tery and Mike O'Shell  
Ruth Penaherrera-Norton  
Kathleen Reddick  
Lillian J. Pfaff  
Shelia Schaefer  
Janet Thomas  
Robert and Dorothy Thurman  
William Weeks

Support reflective as of February 11, 2025, for the current fiscal year. Fiscal year runs July 1, 2024 through June 30, 2025. It is important to the SSO that all our supporters are recognized for their generosity. If you have donated to SSO and have been inadvertently not included, please accept our sincere apologies and call our office

## *The* **NOTABLES**

SSO UNDER 50 CLUB

This social group will provide an opportunity for patrons ages 21-49 to mingle and network with other young patrons and share a love of music, community, and desire to support the Symphony.



## 24-25 Members

Benjamin Beranek	Julia McGuire
Janelle Haik	James Medlock
Tyler Kitek	Amber Musgrave
Emilee Kuschel	Brian Miller
Vonetta Ivy-Medlock	Kyle Waite

Call or visit us online to learn more!

Sponsored by:







Jason Moon, 2024 Winner

# World Classical

## 28<sup>th</sup> International Young Artists' Competition

March 29, 2025 - 9:30 AM - Free Admission  
 Missouri State University - C. Minor Recital Hall at Ellis

Held annually, the competition is open to musicians 18-26 years of age who are currently engaged in undergraduate or graduate studies in colleges or universities or in music conservatories. The competition was founded by and is directed and underwritten by Dr. Duane and Judy Hellam.

- PRIZES:**
- 

**1<sup>ST</sup> PLACE**  
\$7,000<sup>00</sup>
  - 

**2<sup>ND</sup> PLACE**  
\$3,500<sup>00</sup>
  - 

**3<sup>RD</sup> PLACE**  
\$1,500<sup>00</sup>

For application information contact [judyhellam@gmail.com](mailto:judyhellam@gmail.com) or visit [www.hellamcompetition.com](http://www.hellamcompetition.com)

**Applause to our Underwriters:**

- Nancy Back
- Judy Beisner
- Linda Paganini Brite
- Dr. Teresa Olsen
- John Steinberg
- Danielle Tuscher



**Gratitude to our Host Families:**

- Gary & Janice Bennett
- Sharon Bates Benton
- David & Sally Jenkins
- Linda Peacock
- John Steinberg
- Amber & Bryan Musgrave



# Endowments

Endowments benefiting the Springfield Symphony Orchestra are gifts that continue to support the performances, operations, and support the continuity of providing our community with symphonic music for generations. We like to recognize our generous benefactors for their support by acknowledging their gifts.

## Endowed Orchestra Sections & Chairs

Mary Lou Andrews Endowment Fund

*Second Violin Section*

The Judith A. Beisner Endowment Fund

*Principal Cello Chair*

The Paul and Marie Brewster Memorial Endowment Fund

*Trumpet Chair*

The Raver-Detrick Endowment Fund

*Principal Flute Chair*

The Patricia A. LeFevre Fund

*Concertmaster Chair*

The Peggy Day Lee Endowment Fund

*Cello Section*

The Luke and Cynthia Green Libby Endowment Fund

*Oboe Section*

The Walter and Ruth Thomas Endowment Fund

*French Horn Section*

The Dr. Yates and Janet Trotter Endowment Fund

*Principal Tuba Chair*

The William M. "Joe Bill" and Elizabeth J. "Betty Jane" Turner Memorial Endowment Fund

*French Horn Chair*

The Don and Betty Wessel Endowment Fund

*Piano Chair*

The Kay Whitlock Endowment Fund

*Principal Viola Chair*

Support reflective of concert date for the current fiscal year Fiscal year runs July 1, 2024 through June 30, 2025.



Learn about Endowment and Planned Giving by scanning the QR code or visit us online at [springfieldmosymphony.org](http://springfieldmosymphony.org).

# Endowments

## Endowments

The Springfield Symphony Guild  
Endowment Fund  
The Springfield Symphony Cultural  
Trust Fund  
The Bill H. and Margo Simson  
Armstrong Endowment Fund  
The Nancy S. Back Scholarship Fund  
The Earl L. and Jane Barkley  
Memorial Fund  
The Donald H. and Judith A. Beisner  
Endowment Fund  
The Stephen and Linda Paganini  
Brite Endowment Fund  
The Dr. Guy Callaway, Jr.  
Endowment Fund  
\*The William H. Calhoun and Mary  
Helen Calhoun Endowment Fund  
\*\**The Carla M. Calvin Endowment Fund*  
The Shirley A. Carr Endowment Fund  
The Charles R. and Barbara Cook  
Hall Endowment Fund  
The Francis J. Ellis Memorial Fund  
The Carolyn Compton Fay Memorial  
Endowment Fund  
The John and Carolyn Gerdes  
Endowment Fund  
The Mrs. Harley R. Gleason Memorial Fund  
The Rosemary Keller Endowment Fund  
The Fern Kightlinger Memorial Fund  
The Harry F. and Zealia Kirkpatrick  
Endowment Fund  
The Frances Duemler Knox  
Endowment Fund

The Jeanne M. Loveless Memorial Fund  
The Shirley C. Maddy Endowment Fund  
The Evelyn J. McNabb Endowment Fund  
The Mr. and Mrs. Wm. T. McQueary Fund  
The Samuel M. Minasian Memorial Fund  
The Dr. Don and Linda Overend  
Endowment Fund  
The Jacqueline H. Powell Memorial Fund  
The Grace Allan Rosser Memorial Fund  
The Randy and Donna Renkel  
Endowment Fund  
The Joseph Schellhardt Memorial  
Scholarship Fund  
The John H. and Katherine E. Simmons  
Fund  
The Lester F. and Hanna R. Strauss  
Memorial Fund  
The Lester T. Sunderland Foundation  
Fund  
The David and Jeanne Toombs  
Endowment Fund  
The VAN-NAN-PAT Endowment Fund  
The Frances S. Wilke Memorial Fund  
The Don S. and Rosemary Witt  
Memorial Fund  
\*\**The William T. White Endowment Fund*  
The William W. James Jr. Memorial Fund

\* *Through the Community Foundation of the  
Ozarks, Inc.*

\*\* *Special Projects*

## Beethoven Society

The following have notified the Springfield Symphony that they have included the Symphony in their wills:

Mrs. Judy Beisner  
Early M. Brake Jr. Bernard G. and Pamela  
N. Burrier  
Mrs. Jerome A. Caplan  
Ms. Carol Cook  
Mrs. Mildred Eisele

Dr. Eric and Kristi Fulnecky  
Guy and Dorothy Mace  
Thomas and Evelyn Mangan  
Greg and Judy McManus  
Dr. and Mrs. Yates Trotter

## Tributes

*Memorial gifts and Tributes are a heartwarming way of remembering and honoring friends and family through their love of the Springfield Symphony. These gifts help ensure the Springfield Symphony Orchestra to provide the highest level of symphonic music and music education to all of Southwest Missouri.*

### In Memory of Donald Scott

Tony and Jan Atkinson

### In Tribute to Loretta Knutson

Fredna B. Mahaffey

### In Memory of Philip Haensaen

Nancy Terry

### In Memory of Robert Hays

Andre Adingara

Pam Davis

Dennis Fear

Marge Hennings

Gerald Lilja

David Mean

Karen Worden



## 2024-2025 SEASON

October 27, 2024; 3:00 PM

Schweitzer Church

2747 E Sunshine St, Springfield, MO

December 7, 2024; 7:30 PM

*Special Performance with the Springfield Symphony Orchestra*

Juanita K. Hammons Hall

525 S. John Q. Hammons Pkwy, Springfield, MO

April 6, 2025; 3:00 PM

First Baptist Church

525 South Avenue, Springfield, MO



Website:  
[smasingers.org](http://smasingers.org)



**MANAGED IT SERVICES  
BUSINESS PHONES  
VIDEO SURVEILLANCE**

**(417) 881-4101 | ALTECUSA.COM**

# GORMAN-SCHARPF FUNERAL HOME

Brentwood Chapel - University Chapel  
Crematory - Columbarium



Licensed Funeral Directors of Distinction

W. Bruce Howell · Heather K. Howell · Clint W. Mease  
Don J. Lohmeyer · Angela N. Collins · Andrew D. Vowell  
Angie Howell Larsen · Nichole E. Bauer · Dulcinea M. Lane

1947 E. Seminole · 886-9994 · [GormanScharpf.com](http://GormanScharpf.com)

*Locally owned and operated for over 70 years*

# Support the Next 90 Years

## OUR MISSION

To expand awareness and celebrate the performance of the Springfield Symphony Orchestra on the occasion of our 90th anniversary while cultivating the future for the next 90 years.

There are many ways you can help support the Symphony to keep growing into the next 90 years. Your support can come in different forms such as donations, volunteering, and endowments. Gifts to the Symphony provide necessary funding to carry out artistic, outreach and education programming, ultimately helping preserve and expand the Symphony experience for the Southwest Missouri community at large.

### Donate

Some easy ways to donate include:

Donate to Annual Fund  
IRA RMD  
Appreciated Stock  
Trusts & Wills  
Donor Advised Funds  
Auction Items

### Volunteer

Volunteers are a crucial building block in our events and programs. Call or email us if you are interested in volunteer opportunities.

### Endowments

Endowment is a fund of money the principal of which is held in perpetuity and invested, and from which an organization may use only the return on investment. A strong endowment provides an income stream that allows us to meet our commitments and plan for the future without interruption.



### Where to donate?

- Scan the QR code or visit us online.
- Make a donation over the phone by calling the office at (417) 864-6683.
- Mail a check to:  
411 N. Sherman Parway, Springfield, MO 65802



# SPRINGFIELD SYMPHONY GUILD RAFFLE FUNDRAISER

## WIN THIS DIAMOND NECKLACE



Available at Springfield  
Symphony concerts  
starting in September  
from Guild members.



18k yellow gold necklace  
featuring a .22ct round  
brilliant cut diamond in the  
center surrounded by 36  
round brilliant cut diamonds  
weighing a total of .36 carat.  
\$2,500 Retail Value

**Drawing for the winner is at  
the Springfield Symphony  
concert on May 3, 2025**



PRIZE DONATION COURTESY OF



📍 2850 E. Battlefield Rd

☎ (417) 887-1800

📱 @MaxonFineJewelry



PRESENTING SPONSOR  
SPRINGFIELD SYMPHONY ORCHESTRA



BMW OF SPRINGFIELD  
SUNSHINE & HWY 65